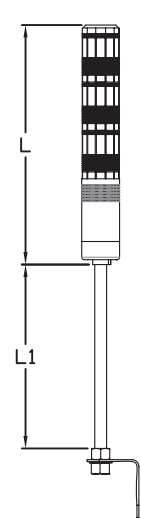


多層警示燈 TOWER LAMP

NTL - T L 5 A 3 - ROG - 1 1 2 3 4 5 6 7

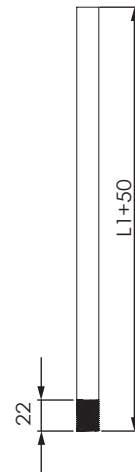
| 項次 Model Designation | 代號 Code | 說明 Description |
|--|------------|--|
| 1. 固定方式 Mounting | N | 桿式 Tube Mounting |
| | T | 桿式-L型鐵架 Side-Mount Bracket |
| | W | 桿式-圓盤底座 Tube Mounting with Round Base |
| | R | 圓盤底座 Direct Mounting with Round Base |
| | F | 可折式 Rotatable Fixing Base |
| 2. 功能 Function | L | 常亮型 Non-Flashing Model |
| | F | 閃光型 Flashing Model |
| | S | 閃光蜂鳴型 Flashing Model with Alarm |
| | B | 常亮蜂鳴型 Non-Flashing Model with Alarm |
| 3. 外徑大小 Dimension | 5 | Ø 50mm |
| 4. 使用電壓 Voltage Rating | A | AC/DC 24V |
| | E | AC 100V~120V |
| | I | AC 220V~240V |
| 5. 層數 Section | 1~5 | 1~5 |
| 6. 燈殼顏色(由上而下依次排列) Lens (Selecting from top to bottom) | R | 紅 Red |
| | O | 黃 Orange |
| | G | 綠 Green |
| | B | 藍 Blue |
| | W | 白 White |
| 7. 附桿長度 Length of Tube | 0 | 0 mm |
| | 1 | 100 mm |
| | 2 | 180 mm |
| | 3 | 250 mm |



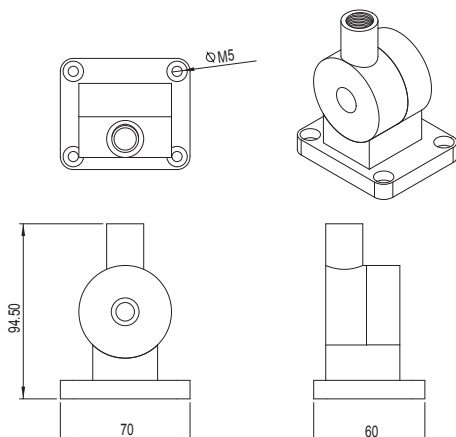
| L | |
|---------------|-----------------|
| 層數 Section | 高度(L) Height |
| 1 | 188.8 |
| 2 | 252.8 |
| 3 | 316.8 |
| 4 | 380.8 |
| 5 | 444.8 |

| L1 | |
|---------------|-----------------|
| 代號 Section | 高度(L) Height |
| 0 | 0 |
| 1 | 100 |
| 2 | 180 |
| 3 | 250 |

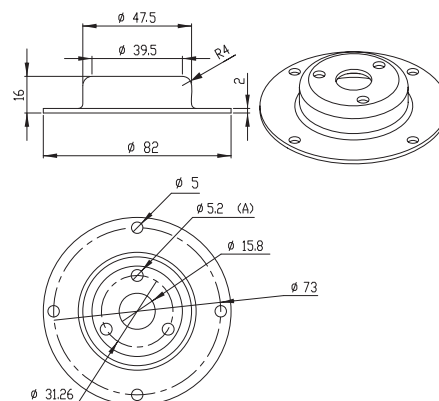
鋁桿 Tube



折彎座 Rotatable Fixing Base



圓盤底座 Round Base



L型鐵架 Side-Mount Bracket

