



### 1.4 Extended Lifetime Relays C31 Power relay

<b>Maximum contact load</b>	10 A / 250 V AC-1 10 A / 30 V DC-1 50 mA / 10 V
<b>Recommended minimum contact load</b>	
<b>Contacts</b>	
Material	AgCuNi
Rated operational current	10 A
Max. inrush current (20 ms)	40 A
Rated switching voltage	250 V
Max. AC load	2500 VA AC-1
Max. DC load	300W / 90W

**Coil**  
Pick-up voltage  $\leq 0.8 \times U_N$   
Release voltage AC / DC  $> 0.15 \times U_N / > 0.05 \times U_N$   
Nominal power AC / DC  $2.5 \text{ VA} / 1.2 \text{ W}$

V <sub>N</sub> AC	Ω	mA	V <sub>N</sub> DC	Ω	mA
24	52	104	12	115	104
48	240	55	24	480	50
115	1350	23	48	1850	26
230	5600	11.5	110	9000	12
			220	29000	7.6

Types with LED indicator take additional 5 ... 10 mA @ < 80 V

**Insulation**  
Contact Open 1.5 kV rms / 1 min  
Contact Contact 1.5 kV rms / 1 min  
Contact Coil 2 kV rms / 1 min

**Specifications**  
Ambient temperature operation, storage -40 ... 70 °C (no ice)  
Pickup time AC / DC 3 ... 10 ms /  $\leq 12$  ms  
Release time AC / DC 2 ... 15 ms /  $\leq 3.5$  ms  
Bounce time NO contact AC / DC 3 ... 6 ms / approx. 3.5 ms  
Mechanical life  $\geq 100\,000$  operations  
Max. switching frequency at rated load 360/h  
Weight 80 g

**Product References**  
AC 50 Hz / 60 Hz: 24, 48, 115, 230 (240)  
LED C31L/AC...V  
C31/DC...V  
LED + Free wheeling diode C31D/DC...V  
Railway EN 50155

\* ... List Coil Voltage to complete Product References  
**Accessories**  
Socket S3-B, S3-S, S3-PO, S3-M0, S3-M1  
Blanking Plug SO-NP (BAG 10 PCS)



#### Connection diagram

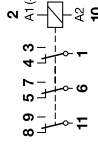


fig. 1 AC voltage endurance

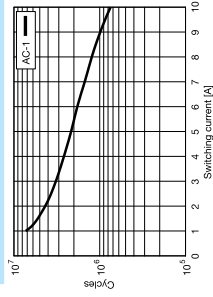
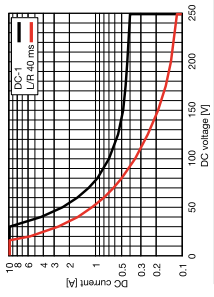
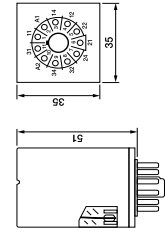


fig. 2 DC load limit curve



#### Dimensions (mm)



#### Technical approvals, conformities

IEC/EN 61810; IEC/EN 60947; IEC/EN 50155  
IEC/EN 61373; IEC/EN 45545  
NF F 16-101/102

### 1.4 Extended Lifetime Relays C32 Control relay

<b>Maximum contact load</b>	6 A / 250 V AC-1 6 A / 30 V DC-1 1 mA / 5 V
<b>Recommended minimum contact load</b>	
<b>Contacts</b>	
Material	AgCuNi
Rated operational current	6 A
Max. inrush current (20 ms)	15 A
Rated switching voltage AC-1	250 V
Max. AC load	1500 VA AC-1
Max. DC load	200 W / 90 W

**Coil**  
Pick-up voltage  $\leq 0.8 \times U_N$   
Release voltage AC / DC  $> 0.15 \times U_N / > 0.05 \times U_N$   
Nominal power AC / DC  $2.5 \text{ VA} / 1.2 \text{ W}$

V <sub>N</sub> AC	Ω	mA	V <sub>N</sub> DC	Ω	mA
24	52	104	12	115	104
48	240	55	24	480	50
115	1350	23	48	1850	26
230	5600	11.5	110	9000	12
			220	29000	7.6

Types with LED indicator take additional 5 ... 10 mA @ < 80 V

**Insulation**  
Contact Open 1.5 kV rms / 1 min  
Contact Contact 1.5 kV rms / 1 min  
Contact Coil 2 kV rms / 1 min

**Specifications**  
Ambient temperature operation, storage -40 ... 70 °C (no ice)  
Pickup time AC / DC 3 ... 10 ms /  $\leq 12$  ms  
Release time AC / DC 2 ... 15 ms /  $\leq 3.5$  ms  
Bounce time NO contact AC / DC 3 ... 6 ms / approx. 3.5 ms  
Mechanical life  $\geq 100\,000$  operations  
Max. switching frequency at rated load 360/h  
Weight 80 g

**Product References**  
AC 50 Hz / 60 Hz: 24, 48, 115, 230 (240)  
LED C32L/AC...V  
C32/DC...V  
LED + Free wheeling diode C32D/DC...V  
Railway EN 50155

\* ... List Coil Voltage to complete Product References  
**Accessories**  
Socket S3-B, S3-S, S3-PO, S3-M0, S3-M1  
Blanking Plug SO-NP (BAG 10 PCS)



#### Connection diagram

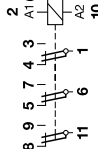


fig. 1 AC voltage endurance

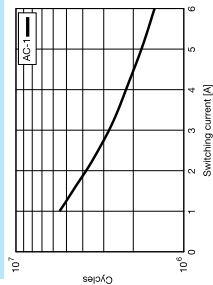
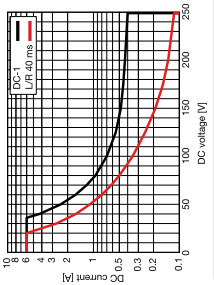
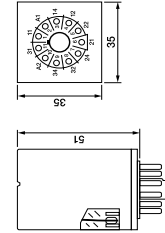


fig. 2 DC load limit curve



#### Dimensions (mm)



#### Technical approvals, conformities

IEC/EN 61810; IEC/EN 60947; IEC/EN 50155  
IEC/EN 61373; IEC/EN 45545  
NF F 16-101/102